



Jericho
Sailing Centre
Association

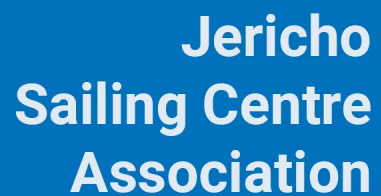
English Bay
Safety Seminar



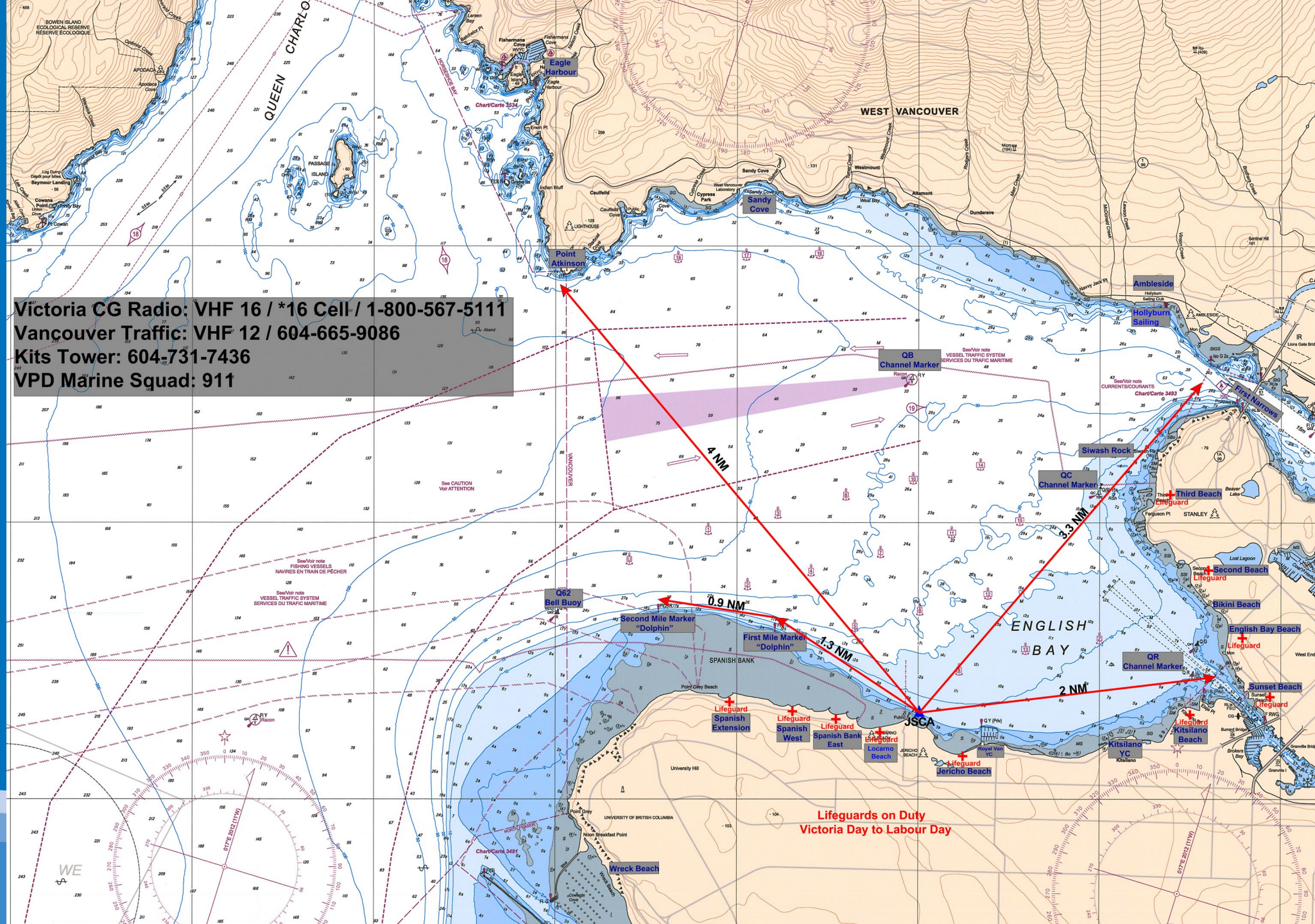
Victoria VHF Radio: 16 Ch / 157.5 MHz
Vancouver Traffic: VFR 2 / 104.66 MHz
Kits Tan: 604-311-4311
VPD Marine Squad: 911

English Bay Safety Seminar

Lifeguards on Duty
Victoria Day to Labour Day



English Bay Safety Seminar





**Jericho
Sailing Centre
Association**

English Bay
Safety Seminar

The Jericho Sailing Centre is Vancouver's Ocean Community Centre for small naturally powered craft: sailing dinghies, windsurfers, kayaks, rowboats, canoes, outriggers, SUP and others.

In 2019 more than 9,000 people took lesson programs through Jericho's affiliated clubs and schools.

Annual craft launches from Jericho Beach are approaching half a million.



Jericho
Sailing Centre
Association

English Bay
Safety Seminar

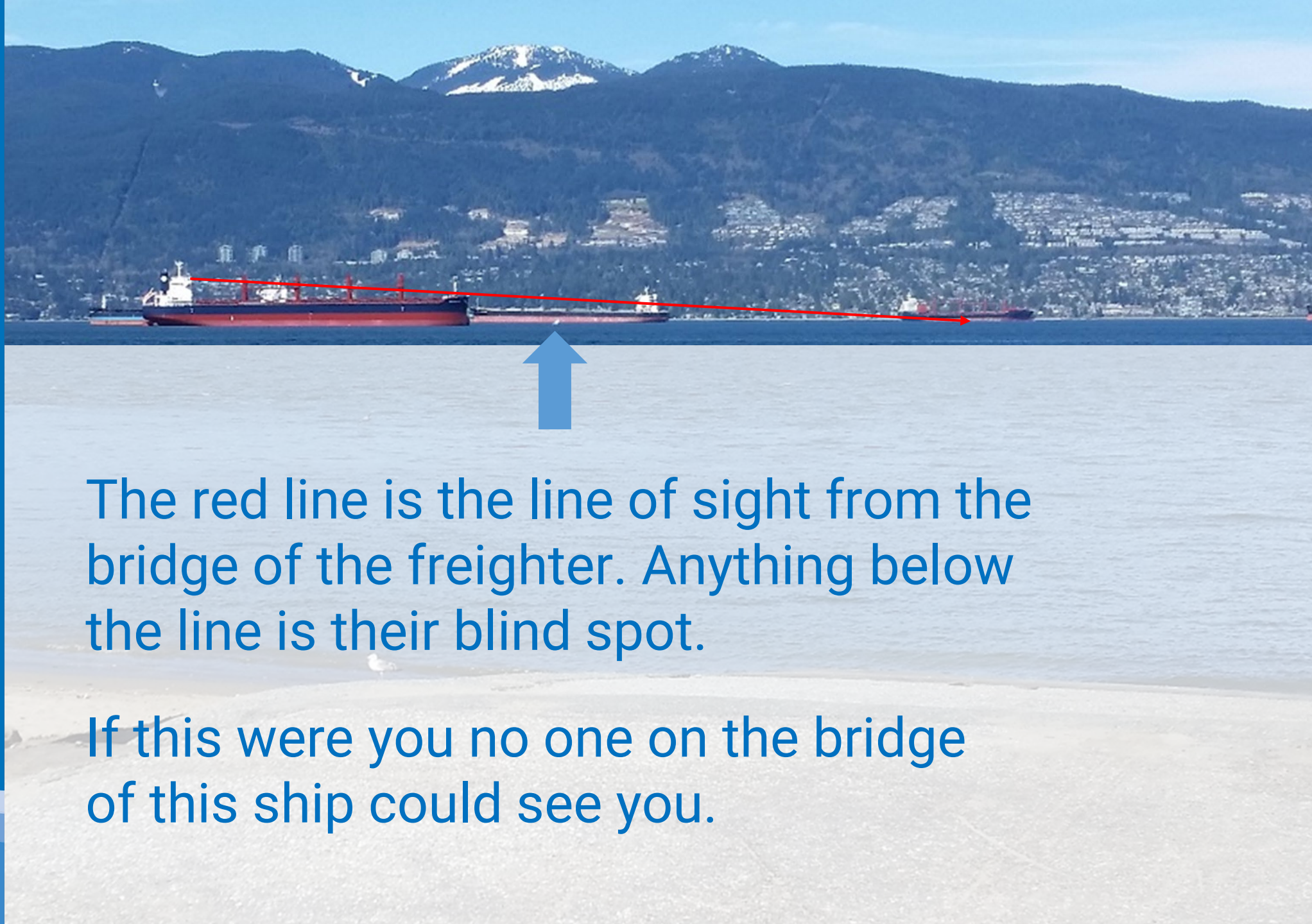
Personal Equipment Environment

Environment

Vancouver is the busiest port in Canada.

More than 3,000 ships a year use the shipping lane (shown in red) to travel to and from the First Narrows.

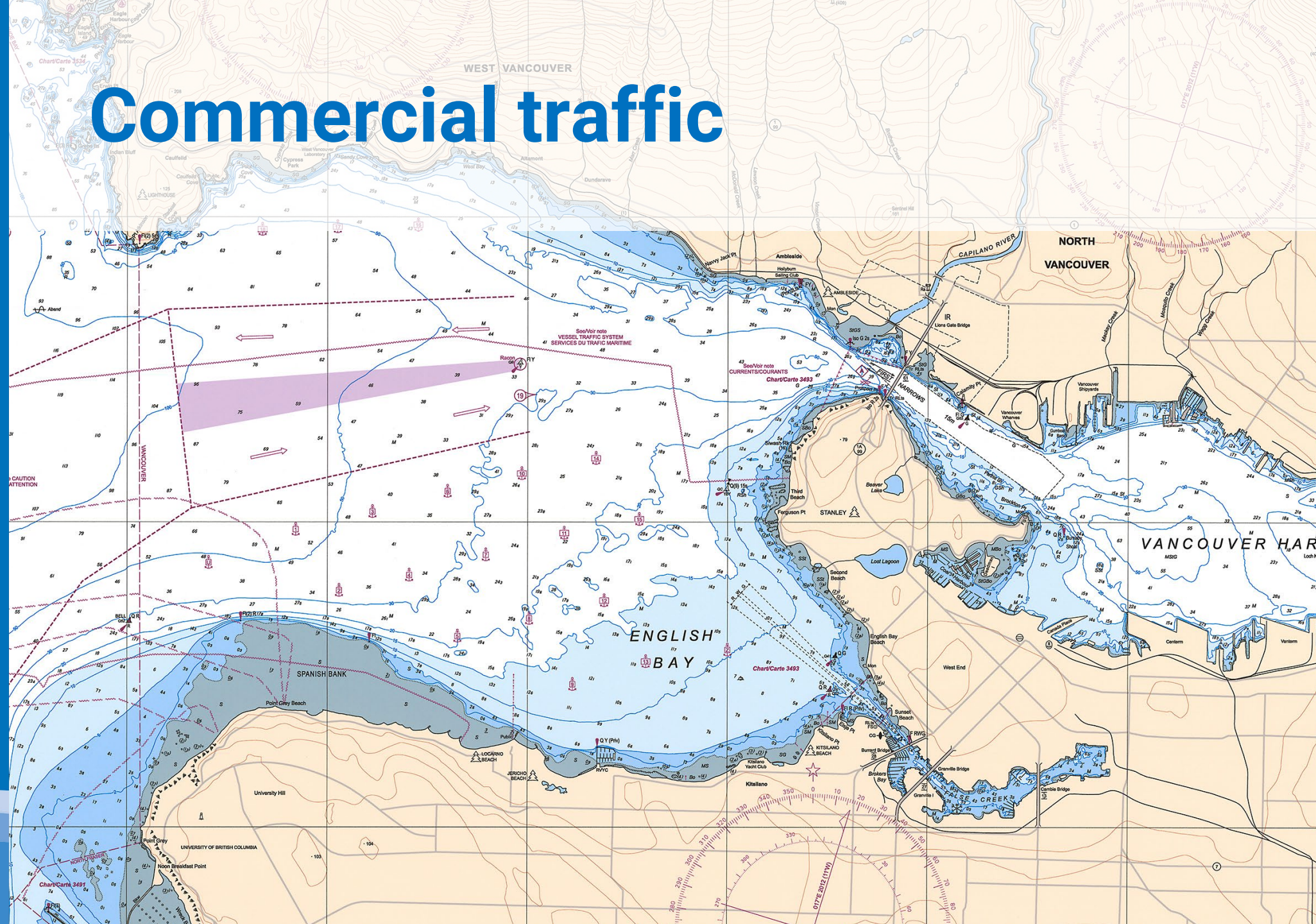




The red line is the line of sight from the bridge of the freighter. Anything below the line is their blind spot.

If this were you no one on the bridge of this ship could see you.

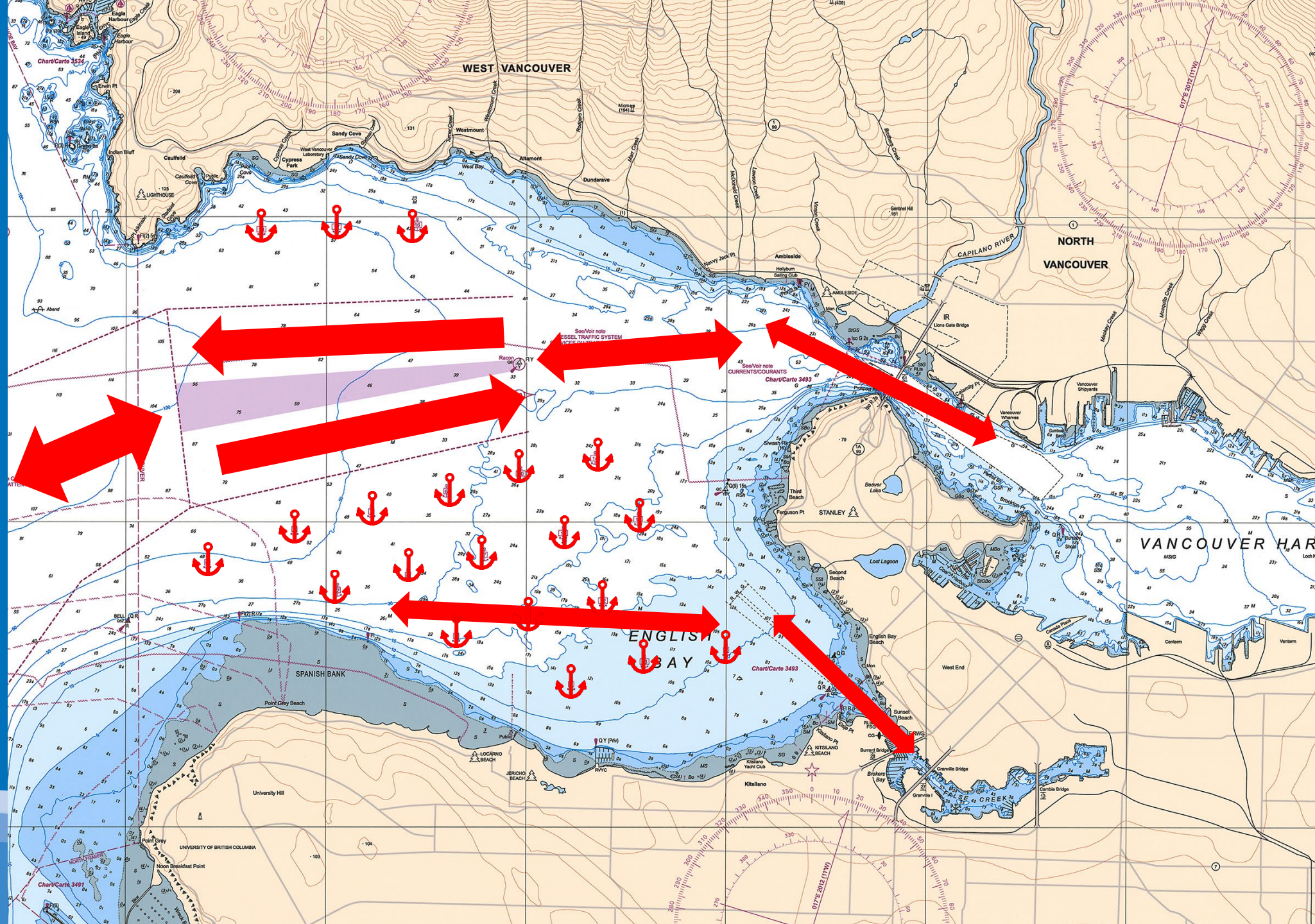
Commercial traffic





Jericho Sailing Centre Association

English Bay
Safety Seminar





Jericho Sailing Centre Association

English Bay
Safety Seminar



Commercial traffic

- Shipping lanes north of the southern anchorages in & out of the inner harbour
- In and out of False Creek and the Kits barge buoy along the south shore
- To and from the anchorages in English Bay
- Stay **at least 50m** from anchored freighters

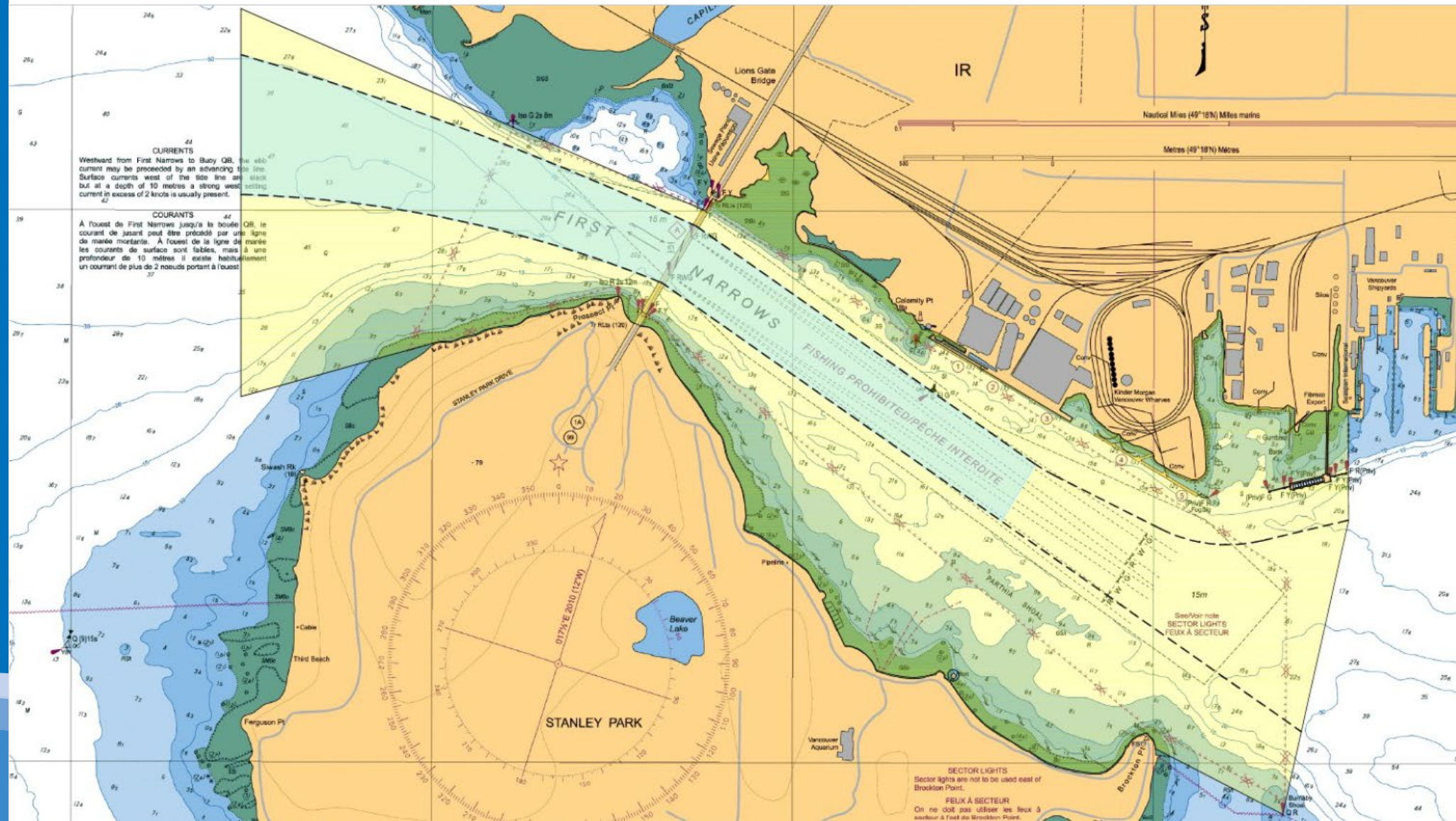
Commercial traffic

- Always assume a tug boat has a tow (often barges or logs)
- Very limited ability to stop, slow down or quickly change direction
- Steel tow cable may be submerged
- **Never pass between a tug & tow – deadly dangerous and illegal**

Commercial traffic

- Commercial fish and crab boats may have gear in the water
- When engaged in fishing limited ability to steer
- Give a wide berth at all times

Traffic Control Zone (TCZ-1)



Traffic Control Zone (TCZ-1)

“No go” zone for all Jericho style craft.



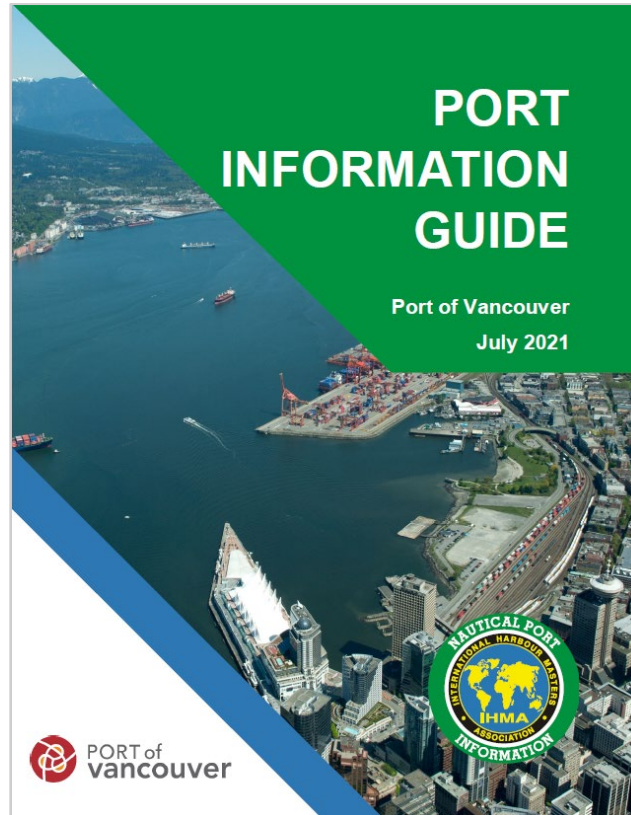


Jericho
Sailing Centre
Association

English Bay
Safety Seminar

Port Information Guide

<https://www.portvancouver.com/marine-operations/port-information-guide/>



Navigation Hazards

- Large ships transiting and at anchor
- Tugs and tows
- Other commercial and recreational vessels
- Swimmers & swim area buoys
- Logs & debris
- Crab trap lines



Geographical Hazards

Jericho
Sailing Centre
Association

English Bay
Safety Seminar



Jericho Pier



Jericho Pier

Jericho
Sailing Centre
Association

English Bay
Safety Seminar





Jericho
Sailing Centre
Association

English Bay
Safety Seminar

Jericho Pier



Jericho Pier

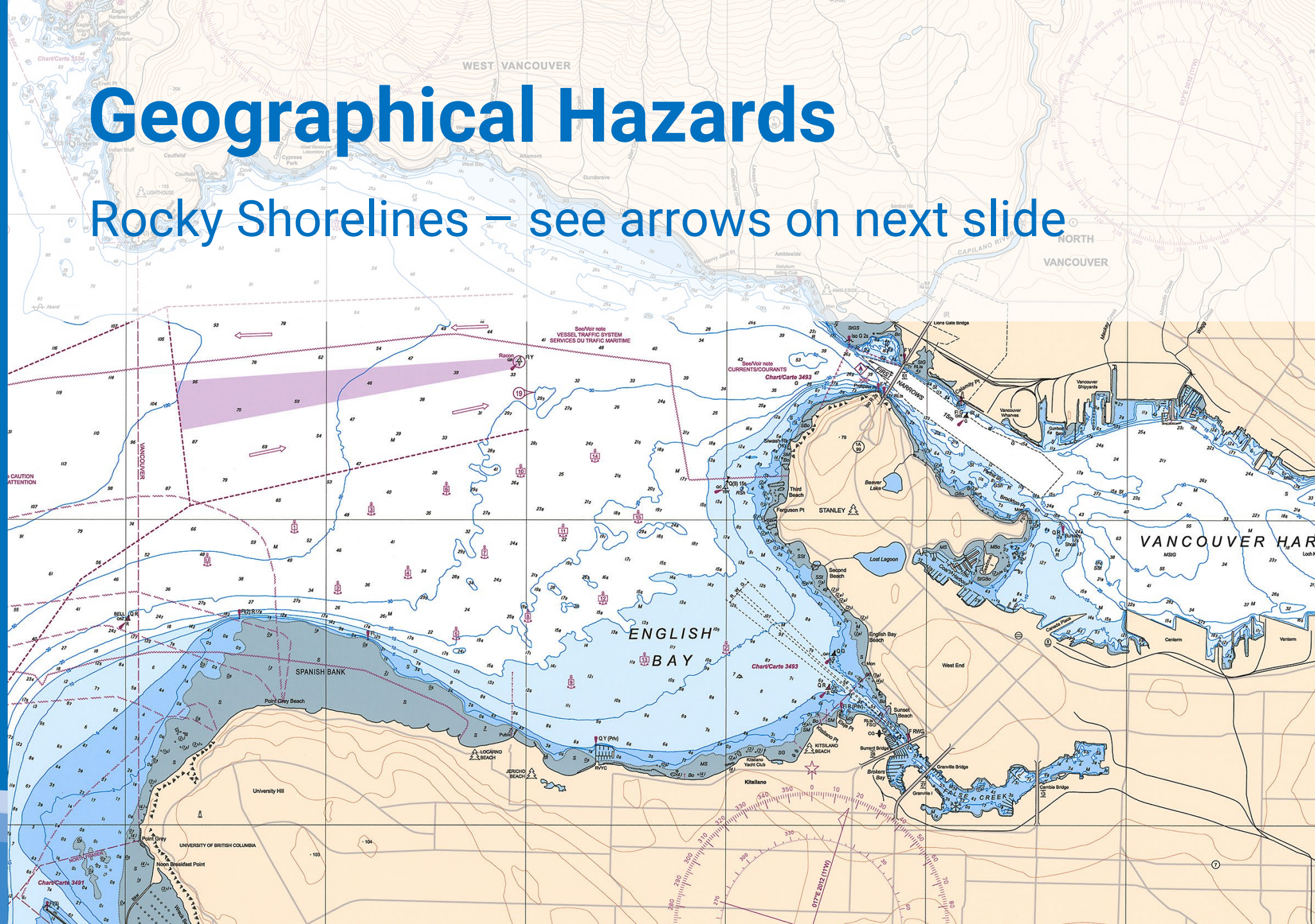
Keep to the north and east of the two striped can buoys to avoid crab and fishing lines.



Spanish Bank – shallow, green areas dry at high tide

Geographical Hazards

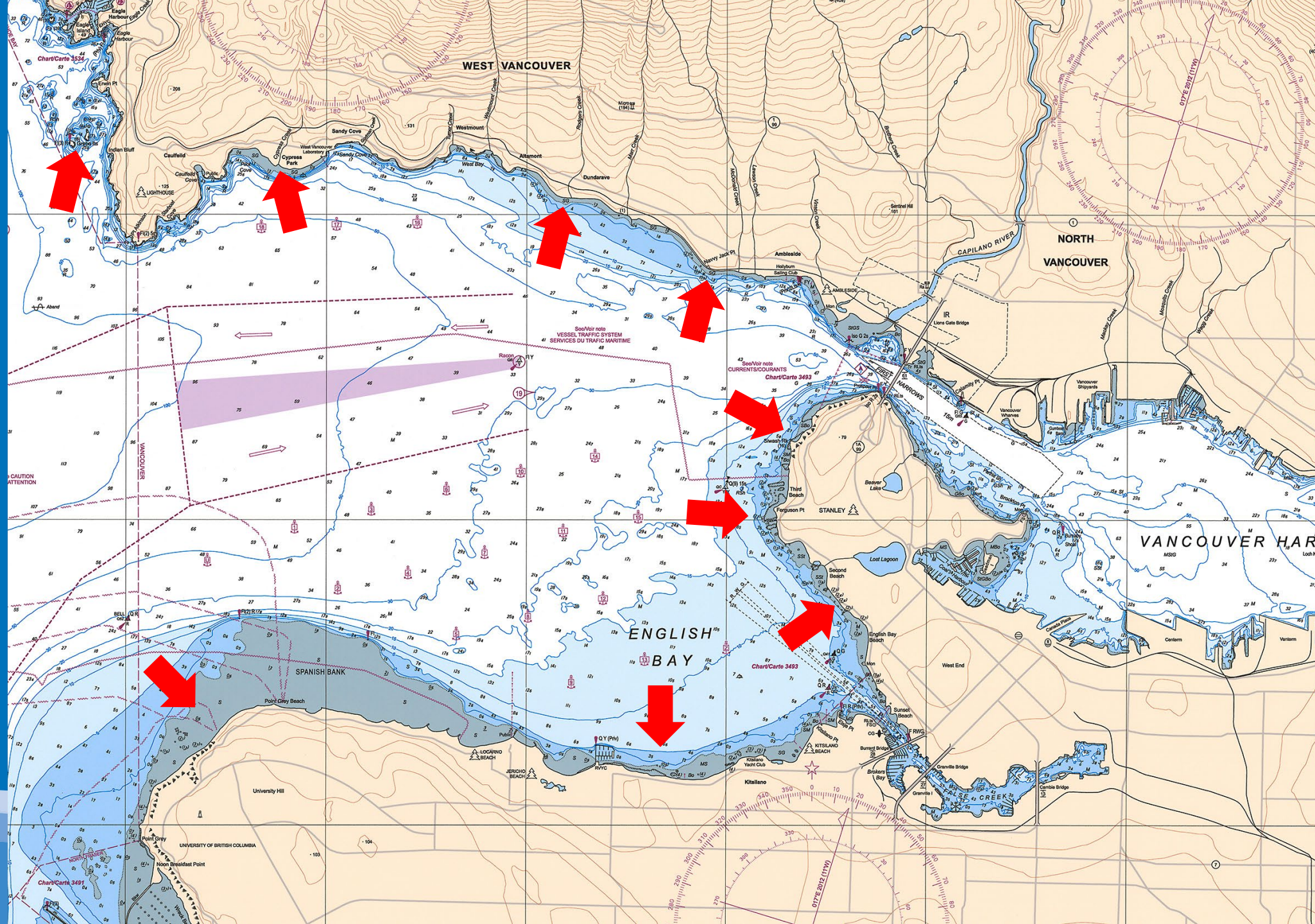
Rocky Shorelines – see arrows on next slide





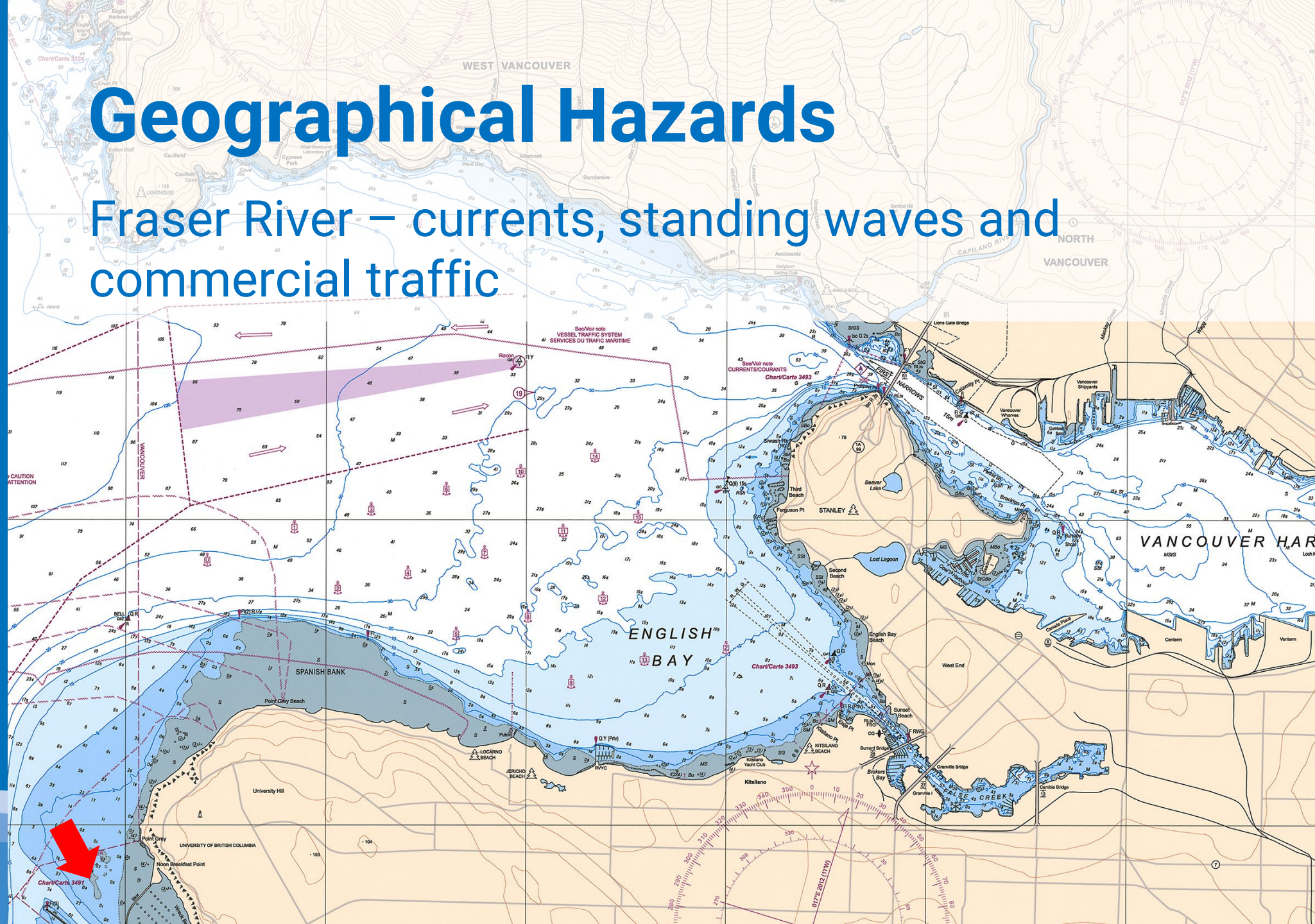
Jericho Sailing Centre Association

English Bay
Safety Seminar



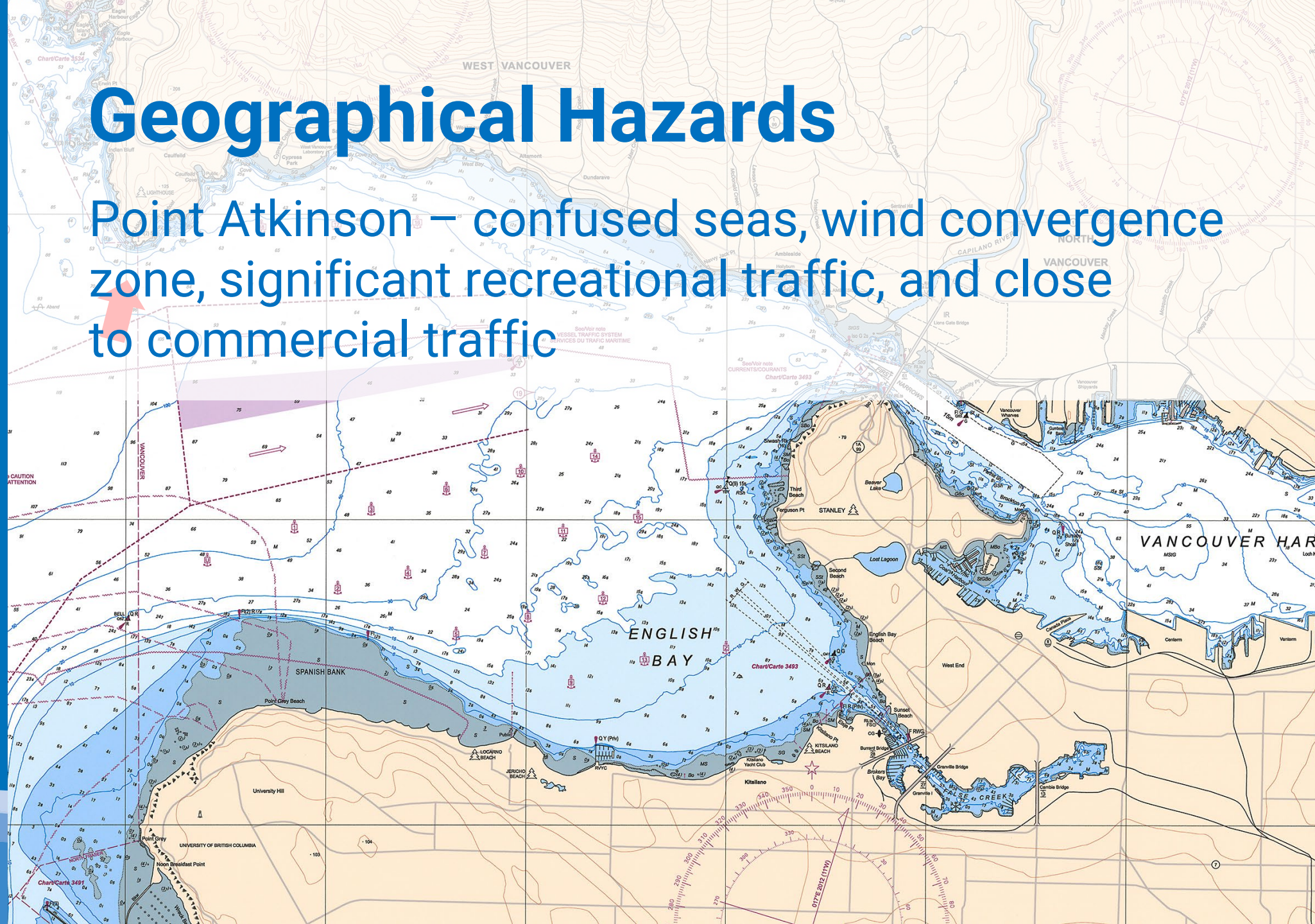
Geographical Hazards

Fraser River – currents, standing waves and commercial traffic



Geographical Hazards

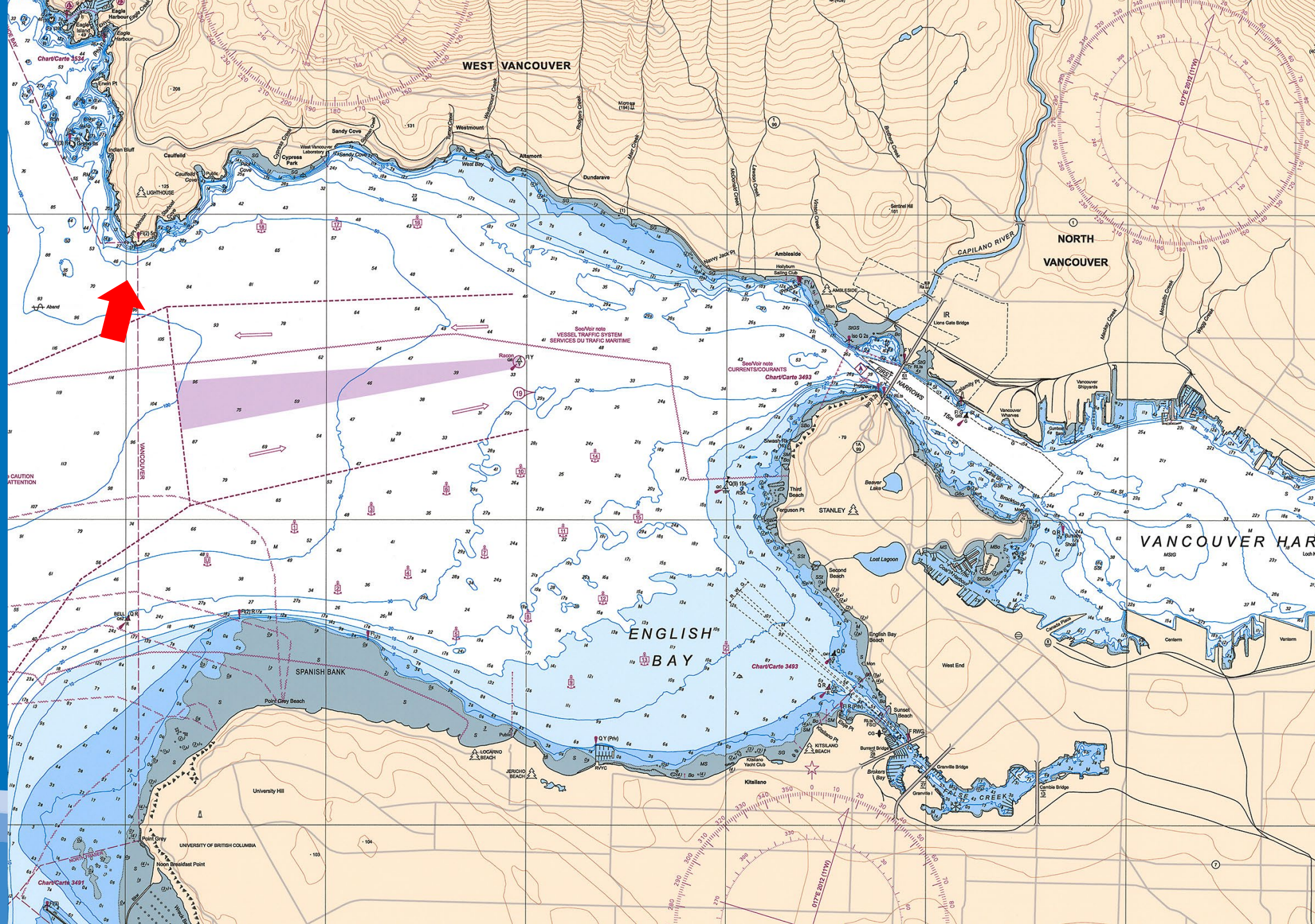
Point Atkinson – confused seas, wind convergence zone, significant recreational traffic, and close to commercial traffic





Jericho Sailing Centre Association

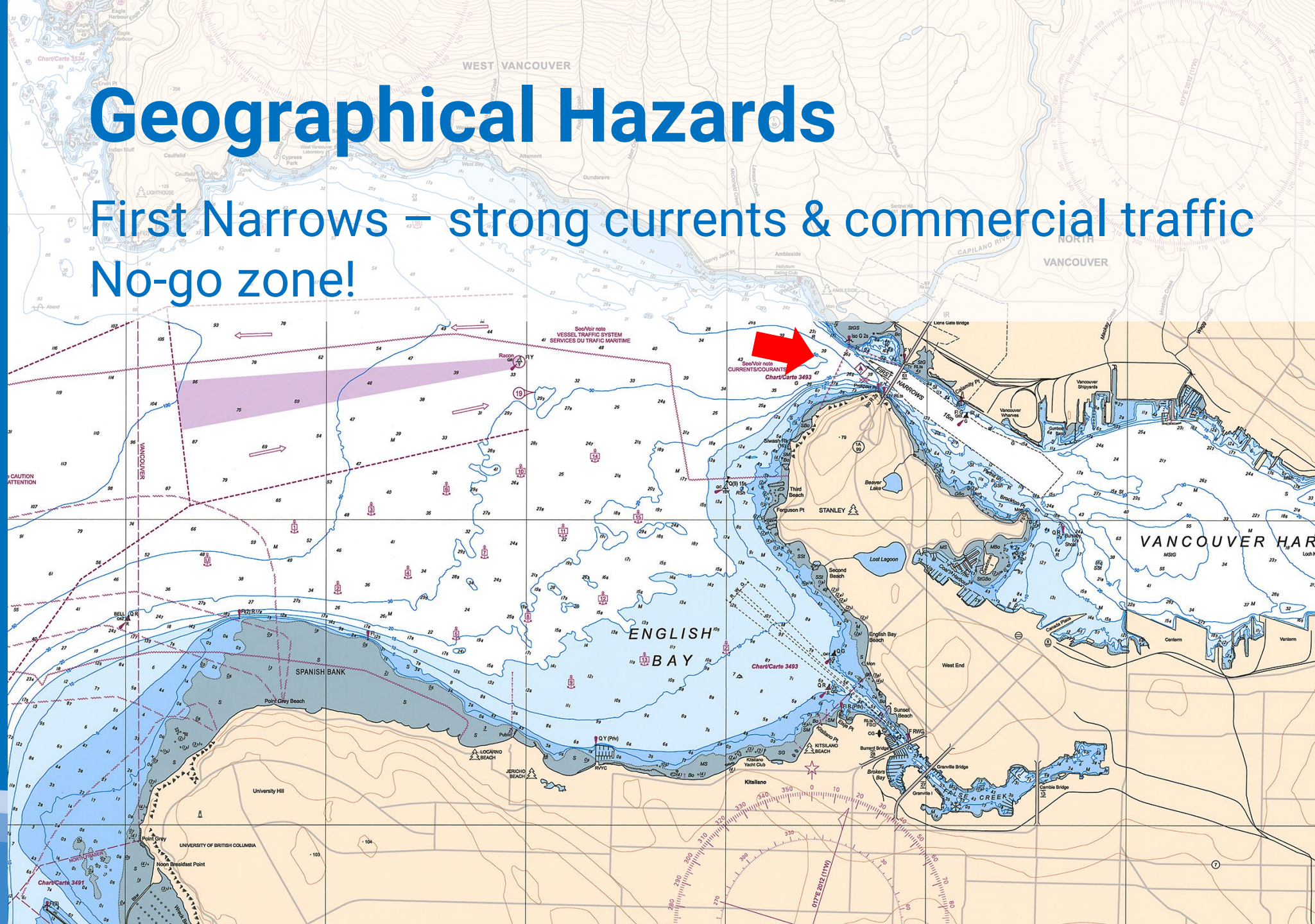
English Bay
Safety Seminar



Geographical Hazards

First Narrows – strong currents & commercial traffic

No-go zone!

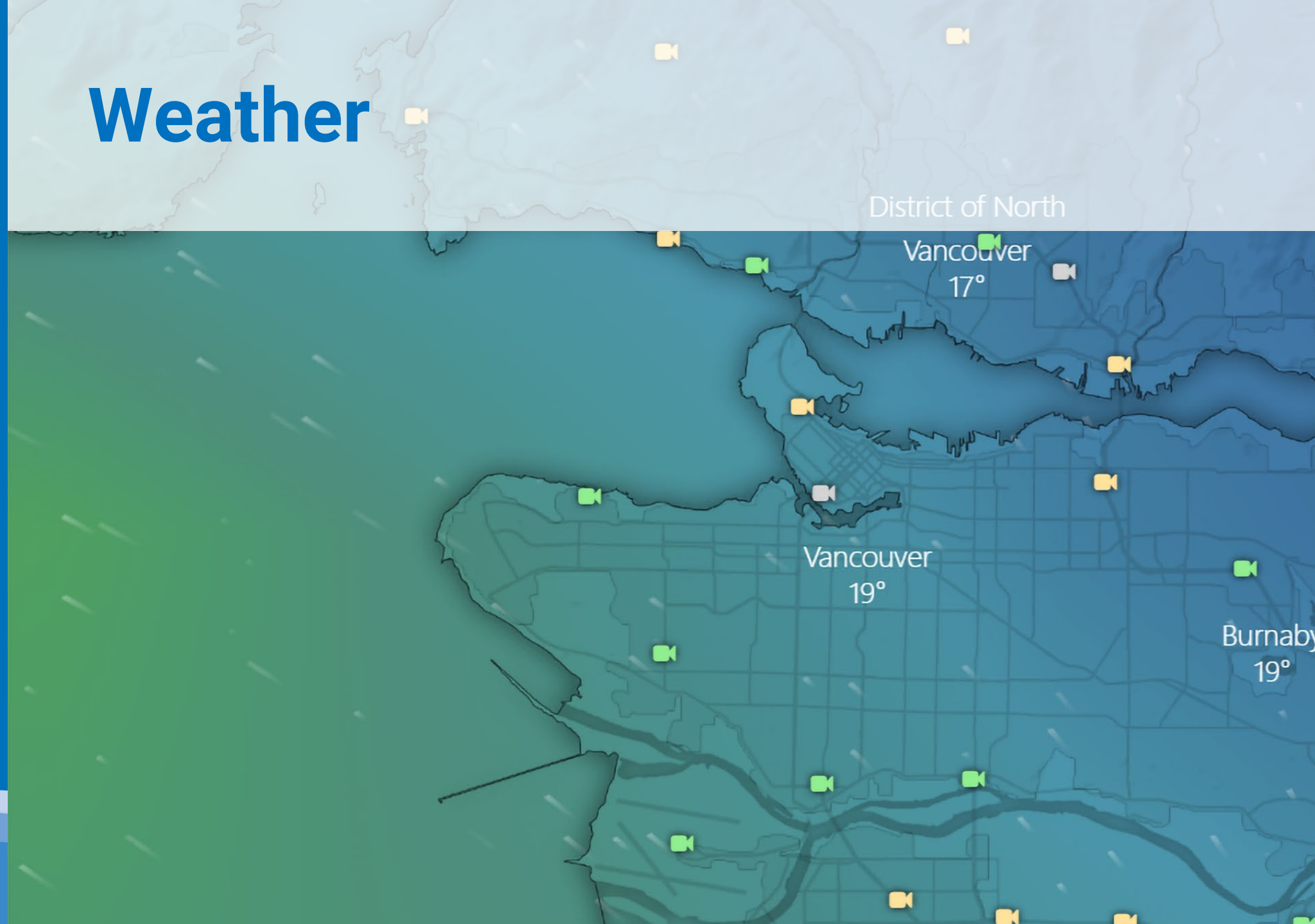




Jericho
Sailing Centre
Association

English Bay
Safety Seminar

Weather





Jericho
Sailing Centre
Association

English Bay
Safety Seminar

Weather

Environment Canada Marine Area Forecast Georgia Strait South of Nanaimo

[Home](#) > [Environment and natural resources](#) > [Weather information](#) > [Marine](#) > [Marine Forecasts](#) > [Pacific - Georgia Basin](#)

[Access city](#) | [Weather T](#)

Strait of Georgia - south of Nanaimo

Forecast

Weather Conditions

Ice Conditions

Warnings

Synopsis

Winds

Issued 04:00 PM PDT 16 July 2021

Tonight and Saturday.

Wind southeast 10 to 20 knots diminishing to light this evening then becoming southeast 5 to 15 late Saturday morning. Wind becoming light Saturday evening.

Weather & Visibility

Issued 04:00 PM PDT 16 July 2021

Tonight and Saturday.

Showers overnight.

Extended Forecast

Issued 04:00 PM PDT 16 July 2021

Sunday

Wind northwest 5 to 15 knots becoming southeast 5 to 15 in the afternoon.

Monday

Wind northwest 5 to 15 knots becoming southeast 5 to 15.



Jericho
Sailing Centre
Association

English Bay
Safety Seminar

Windy: Wind map & weather fore x

Strait of Georgia - south of Nana x

+

← → ↺

weather.gc.ca/marine/forecast_e.html?mapID=03&siteID=14305

★

📄

Apps

PPA Current Traffic

weather data file

Base License

Strait of Georgia - s...

Webmail Login


7 days Tidal Predict...


MetPort

»

Other bookmarks

Fr

Government of Canada

Gouvernement du Canada

MENU ▾

[Home](#) > [Environment and natural resources](#) > [Weather information](#) > [Marine](#) > [Marine Forecasts](#) > [Pacific - Georgia Basin](#)

[Access city](#) | [Weather T](#)

Strait of Georgia - south of Nanaimo

Forecast

Weather Conditions

Ice Conditions

Warnings

Synopsis

Winds

Issued 04:00 PM PDT 16 July 2021

Tonight and Saturday.

Wind southeast 10 to 20 knots diminishing to light this evening then becoming southeast 5 to 15 late Saturday morning. Wind becoming light Saturday evening.

Weather & Visibility

Issued 04:00 PM PDT 16 July 2021

Tonight and Saturday.

Showers overnight.

Extended Forecast

Issued 04:00 PM PDT 16 July 2021

Sunday

Wind northwest 5 to 15 knots becoming southeast 5 to 15 in the afternoon.

Monday

Wind northwest 5 to 15 knots becoming southeast 5 to 15.



Jericho
Sailing Centre
Association

English Bay
Safety Seminar

Windy: Wind map & weather for... Weather | Jericho Sailing Centre

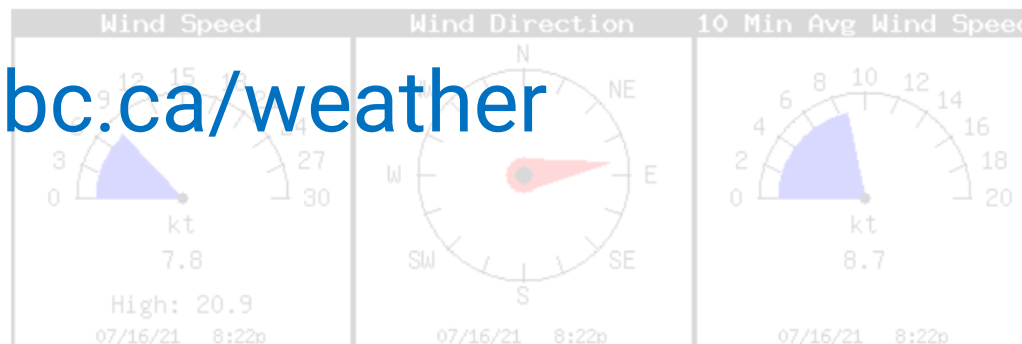
jsca.bc.ca/services/weather/

Weather

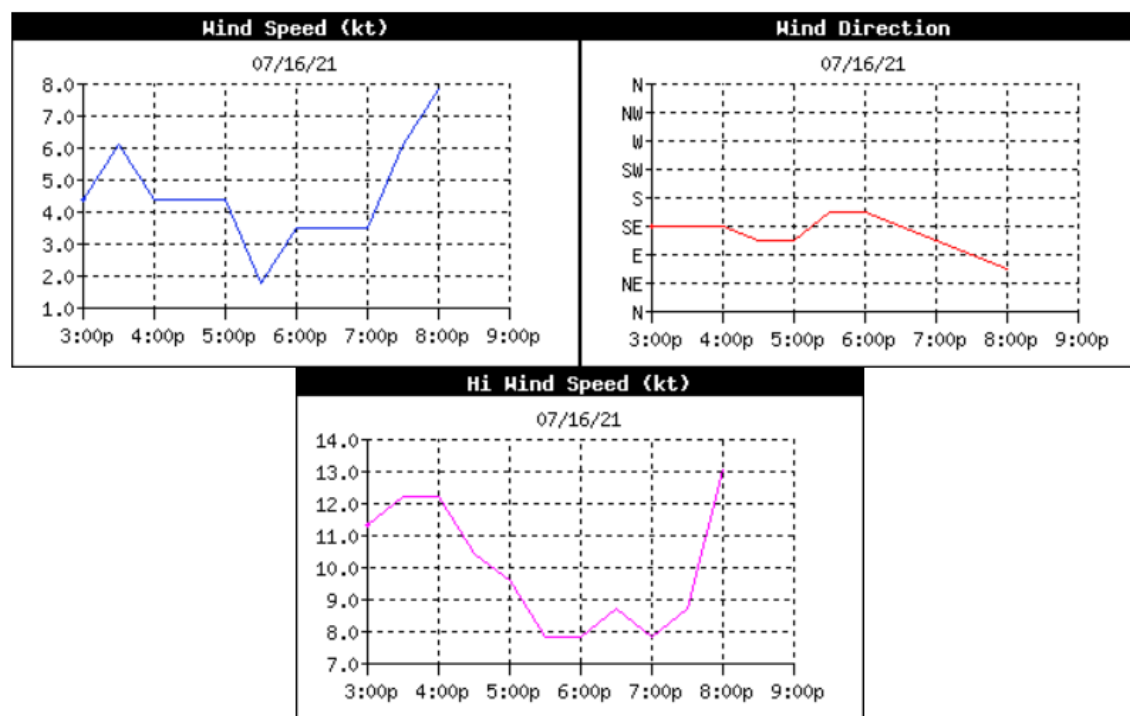
Apps Base License Strait of Georgia - s... Webmail Login 7 days Tidal Predict...

Current Conditions

jsca.bc.ca/weather



Source: Davis Instruments Vantage Pro2 WeatherStation — 2-day data dump6-hour trend ...



Search

Weather Resources

- Big Wave Dave Wind Forecast
- Georgia Strait Marine Forecast
- Local Tide Information
- Vancouver Weather (Environment Canada)
- Windy Wind Map

The Galley

Our restaurant and deck are open to the public. Come enjoy the best ocean side views around.

[FIND OUT MORE](#)

Featured Posts

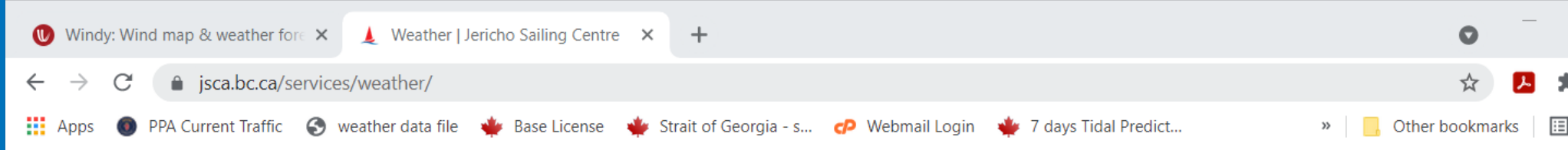
[Jericho Sailing Centre Etiquette](#)

Common sense and consideration of fellow members help make the Jericho

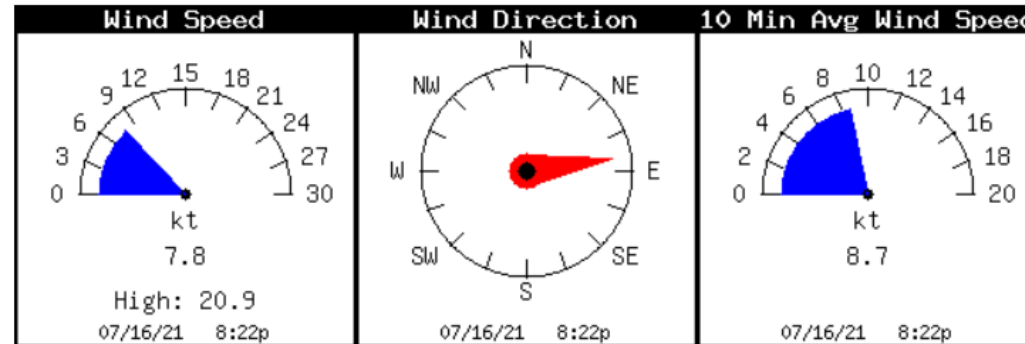


Jericho
Sailing Centre
Association

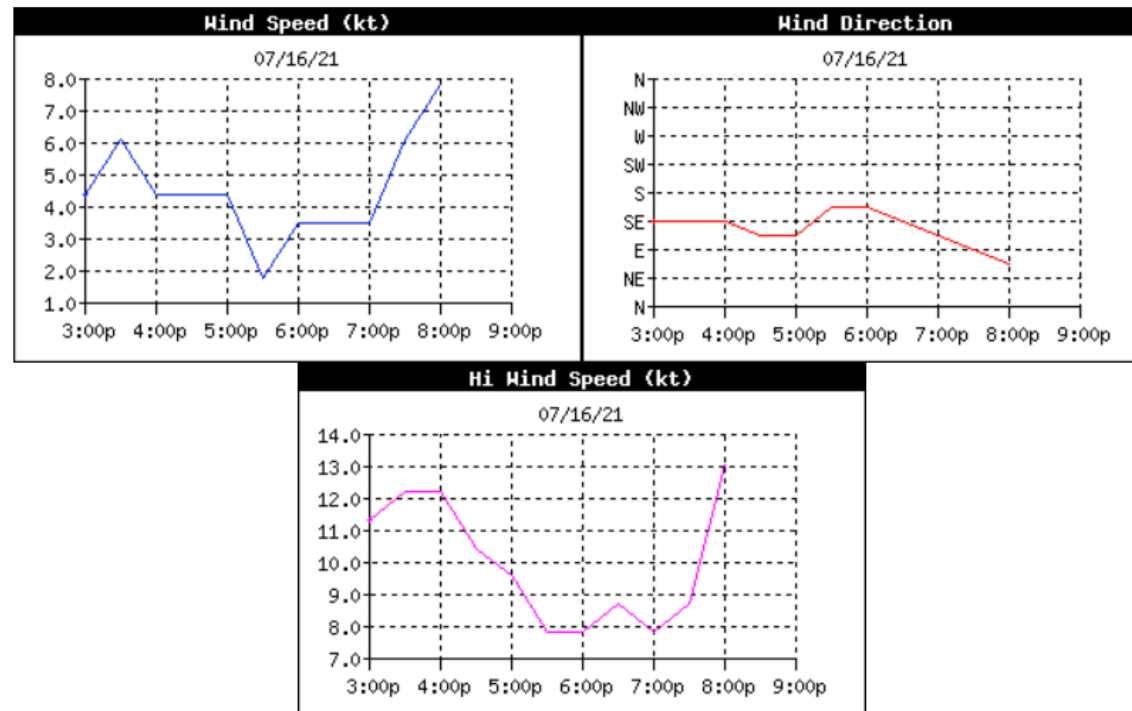
English Bay
Safety Seminar



Current Conditions



Source: Davis Instruments Vantage Pro2 WeatherStation — [2-day data dump](#) 6-hour trend ...



Search

Weather Resources

- [Big Wave Dave Wind Forecast](#)
- [Georgia Strait Marine Forecast](#)
- [Local Tide Information](#)
- [Vancouver Weather \(Environment Canada\)](#)
- [Windy Wind Map](#)

The Galley

Our restaurant and deck are open to the public. Come enjoy the best ocean side views around.

[FIND OUT MORE](#)

Featured Posts

[Jericho Sailing Centre Etiquette](#)

Common sense and consideration of fellow members help make the Jericho

Weather

Weather information in JSCA foyer

FRIDAY, JULY 16

WIND SE 10-15 KNOTS

↑ TO SE 15-20 THIS
AFTERNOON

Outlook

Sunset

2111H

Tides

0552	7.9'
1051	11.2'
1652	5.9'
2344	15.1'

Jericho Sailing
Centre Association
(604) 224-4177

BOATING AROUND KILLER WHALES - 2021 Map of south coast of Vancouver Island, British Columbia

This map is being distributed to all members of the JSCA and is for informational purposes only. It is not intended to be used as a navigational aid. The JSCA is not responsible for any accidents or damage resulting from the use of this map. The JSCA is not responsible for any accidents or damage resulting from the use of this map. The JSCA is not responsible for any accidents or damage resulting from the use of this map.





Welcome to the



FRIDAY, JULY 16

Sunset

2111H

WIND SE 10-15 KNOTS

Tides

↑ TO SE 15-20 THIS
Outlook AFTERNOON

0552	7.9'
1051	11.2'
1652	5.9'
2344	15.1'

Jericho Sailing
Centre Association
(604) 224-4177

BOATING AROUND KILLER WHALES - 2021
Map of south coast of Vancouver Island, British Columbia





Jericho Sailing Centre Association

English Bay
Safety Seminar





Jericho
Sailing Centre
Association

English Bay
Safety Seminar

A digital display showing a marine forecast. The background is a light purple gradient with a faint image of a sailboat. The text is in various colors and sizes, with a blue header, black sub-header, and red warning text. The bottom of the display has a dark blue bar with white text.

**Marine Area Forecast for
Georgia Strait South**

Jericho
SAILING CENTRE

Issued 04:00 PM PDT 29 May 2023

Tonight and Tuesday

Strong wind warning in effect.

Wind light increasing to northwest 15 to 25 kts this evening then
diminishing to northwest 5 to 15 Tuesday morning. Wind
becoming variable 5 to 10 Tuesday afternoon.

5/29/2023 6:06 PM

Vancouver's Ocean Community Centre | www.jsca.bc.ca

LG



**Jericho
Sailing Centre
Association**

English Bay
Safety Seminar

Weather

Weather Apps & websites:

Windy.com

SailFlow

PredictWind

WeatherCAN (Environment Canada)

windisgood.com (Big Wave Dave)



Jericho
Sailing Centre
Association

English Bay
Safety Seminar

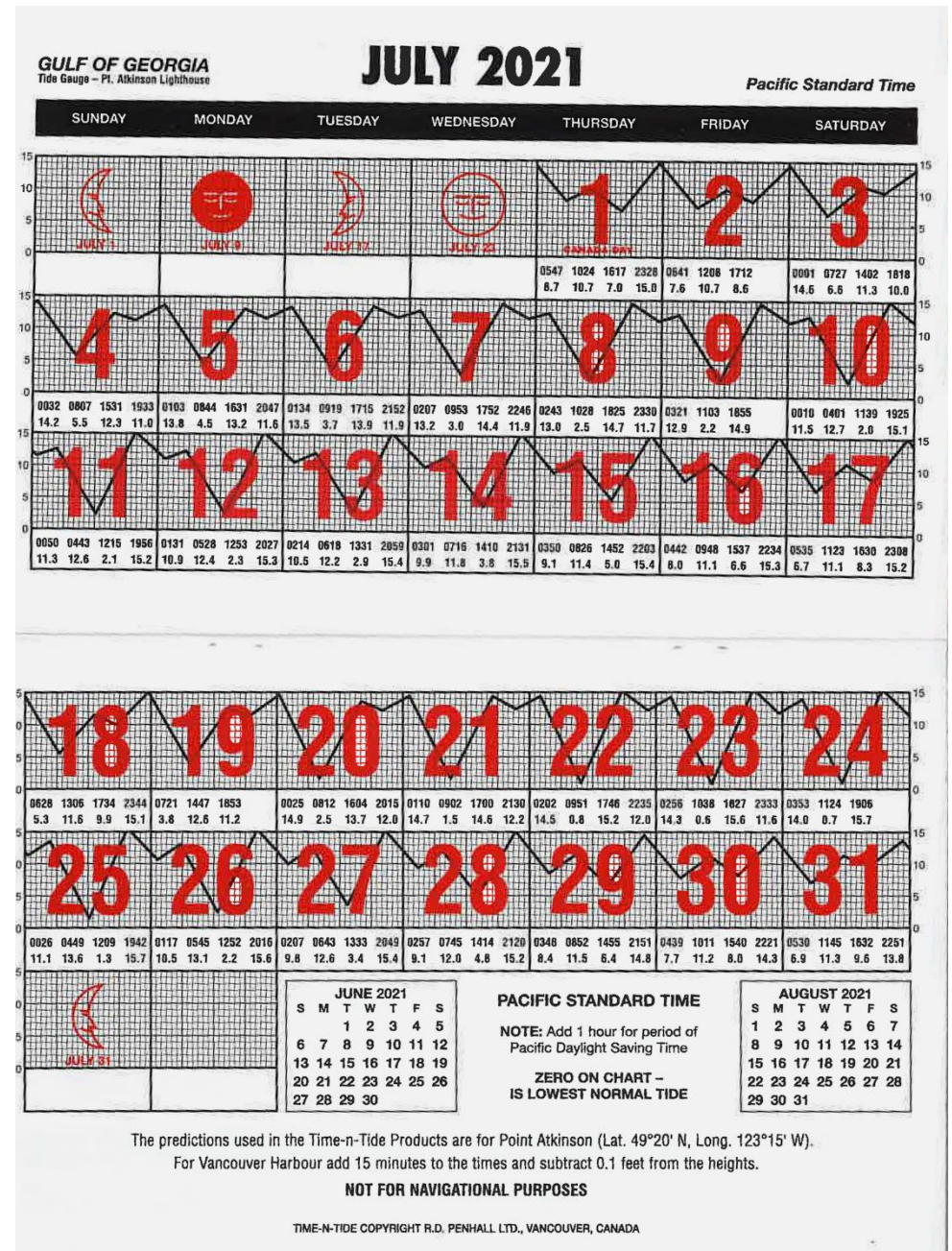
Tides



Tides

<https://www.tides.gc.ca/eng/station?sid=7795>

Tide apps:
AyeTides
Tide Pro
& more...



Marine Wildlife

Maintain a minimum approach distance of:

- 400m from all killer whales in southern BC coastal waters between Campbell River and just north of Ucluelet
- 200m away from all killer whales in Canadian Pacific waters other than those described above
- 200m away from all whales, porpoises and dolphins when in resting position or with a calf
- 100m for other whales, porpoises and dolphins

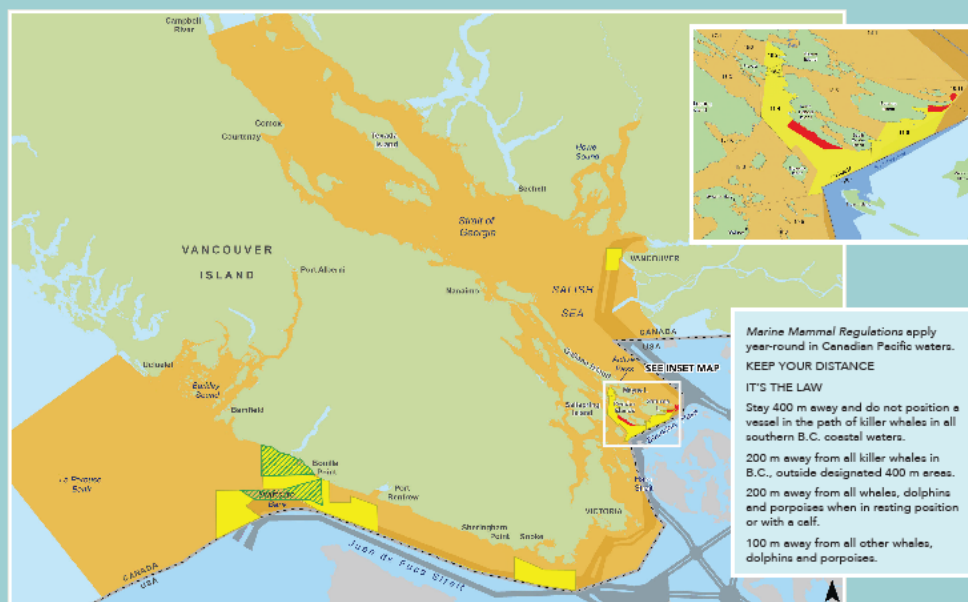
Marine Wildlife

Do not approach a marine mammal to feed it, swim/interact with it, move it or entice it to move from its immediate vicinity, separate it from members of its group, or trap it between a vessel and the shore or between a vessel and one or more other vessels.

Marine Wildlife – Killer Whales

BOATING AROUND KILLER WHALES – 2023

Map of South Coast of Vancouver Island, British Columbia



Stay 400 m away and do not position a vessel in the path of killer whales in all southern B.C. coastal waters between Campbell River and just north of Ucluelet. In effect until May 31, 2024.

Vessels with a purple authorized vessel (AV) flag are allowed to be closer to non-Southern Resident killer whales. DO NOT FOLLOW THEM.

Two Speed Restricted Zones (SRZ) from June 1 to November 30. Vessels must not go more than 10 knots (kn) in these areas, with some exceptions. For a list of exceptions, please visit the 2023 Management Measures webpage via the QR code below.

Do not enter Interim Sanctuary Zones (ISZ) from June 1 to November 30. No boating. No fishing.

Human-powered vessels (kayaks, canoes, stand up paddle boards etc.) may use a 20 m transit corridor along the shoreline.

For a list of exceptions, please visit the 2023 Management Measures webpage via the QR code below.

No recreational and commercial salmon fishing in area-based fishery closures.

- Swiftsure Bank: in effect following expiry of the Chinook non-retention measures to October 31.
- Juan de Fuca Strait: in effect following expiry of the Chinook non-retention measures to October 31.
- Gulf Islands: in effect following the first confirmed presence of Southern Resident killer whales until November 30. Monitoring for confirmed presence of Southern Resident killer whales begins May 1.
- Mouth of the Fraser River: in effect from August 1 to September 30.

Be Whale Wise

- Stop fishing (do not haul gear) when within 1,000 m of killer whales.
- Reduce speed to less than 7 kn when within 1,000 m of the nearest whale.
- When safe to do so, turn off fish finders and echo sounders.
- If you are too close, place engine in neutral idle and allow animals to pass.

Shipping lanes

Report any violations or incidents involving marine mammals (that you observed or were involved in) to Fisheries and Oceans Canada's 24/7 Observe, Record, Report line:

1-800-465-4336

DFO.ORR-ONS.MPO@dfo-mpo.gc.ca

For more information on the 2023 measures, visit:

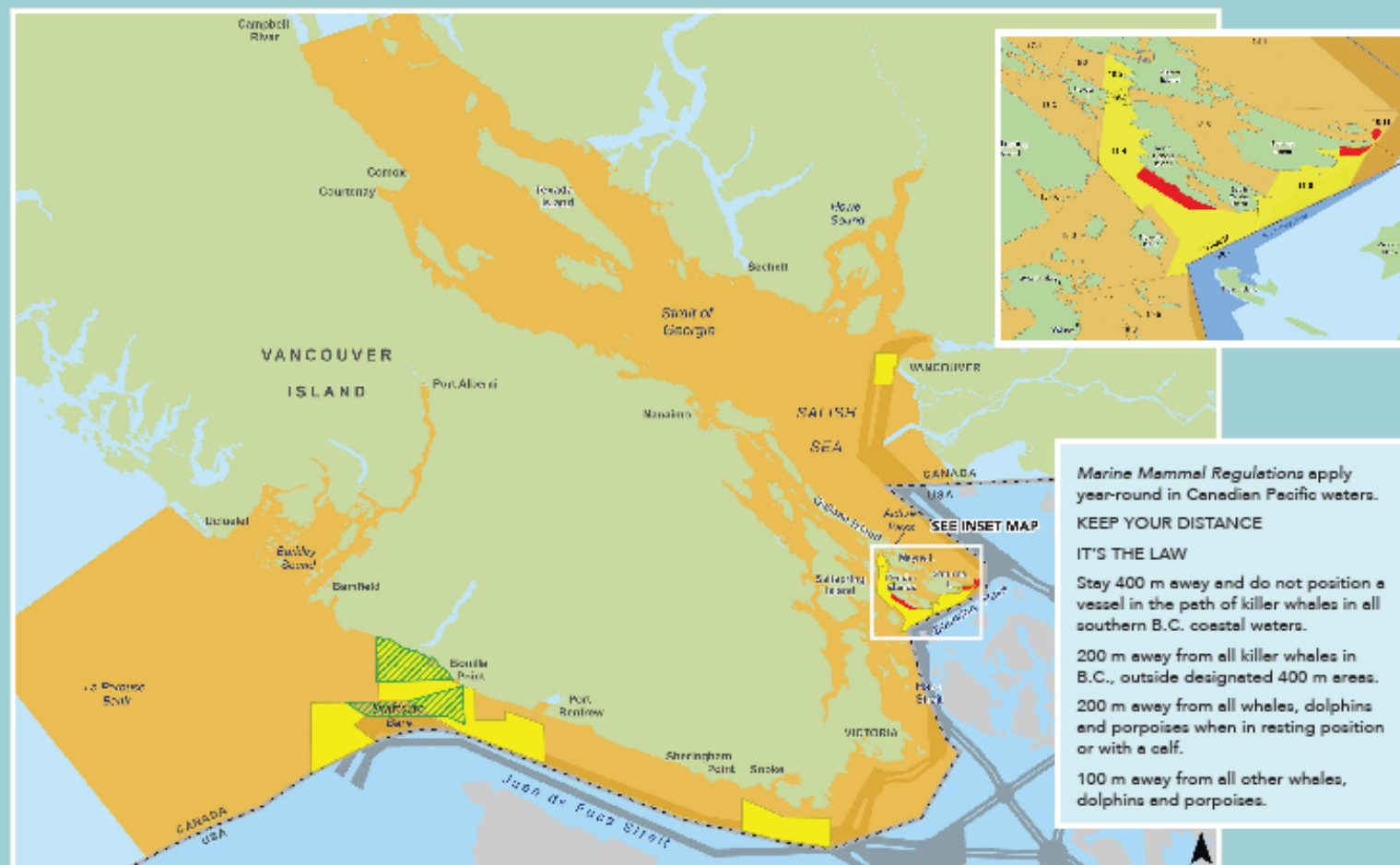


Be Whale Wise:



BOATING AROUND KILLER WHALES – 2023

Map of South Coast of Vancouver Island, British Columbia



Stay 400 m away and do not position a vessel in the path of killer whales in all southern B.C. coastal waters between Campbell River and just north of Ucluelet. In effect until May 31, 2024.

Vessels with a purple authorized vessel (AV) flag are allowed to be closer to non-Southern Resident killer whales. **DO NOT FOLLOW THEM.**

Two Speed Restricted Zones (SRZ) from June 1 to November 30.

Vessels must not go more than 10 knots (kn) in these areas, with some exceptions.

For a list of exceptions, please visit the 2023 Management Measures webpage via the QR code below.

Do not enter Interim Sanctuary Zones (ISZ) from June 1 to November 30.

No boating. No fishing.

Human-powered vessels (kayaks, canoes, stand up paddle boards etc.) may use a 20 m transit corridor along the shoreline.

For a list of exceptions, please visit the 2023 Management Measures webpage via the QR code below.

No recreational and commercial salmon fishing in area-based fishery closures.

- Swifsure Bank: in effect following expiry of the Chinook non-retention measures to October 31.
- Juan de Fuca Strait: in effect following expiry of the Chinook non-retention measures to October 31.
- Gulf Islands: in effect following the first confirmed presence of Southern Resident killer whales until November 30. Monitoring for confirmed presence of Southern Resident killer whales begins May 1.
- Mouth of the Fraser River: in effect from August 1 to September 30.

Be Whale Wise

- Stop fishing (do not haul gear) when within 1,000 m of killer whales.
- Reduce speed to less than 7 kn when within 1,000 m of the nearest whale.
- When safe to do so, turn off fish finders and echo sounders.
- If you are too close, place engine in neutral idle and allow animals to pass.

Shipping lanes



Jericho
Sailing Centre
Association

English Bay
Safety Seminar

Marine Wildlife

DFO Observe, Record and Report line:
1.800.465.4336

More information:



<https://www.pac.dfo-mpo.gc.ca/fm-gp/mammals-mammiferes/whales-baleines/srkw-measures-mesures-ers-eng.html>

Marine Wildlife

Be Whale Wise:



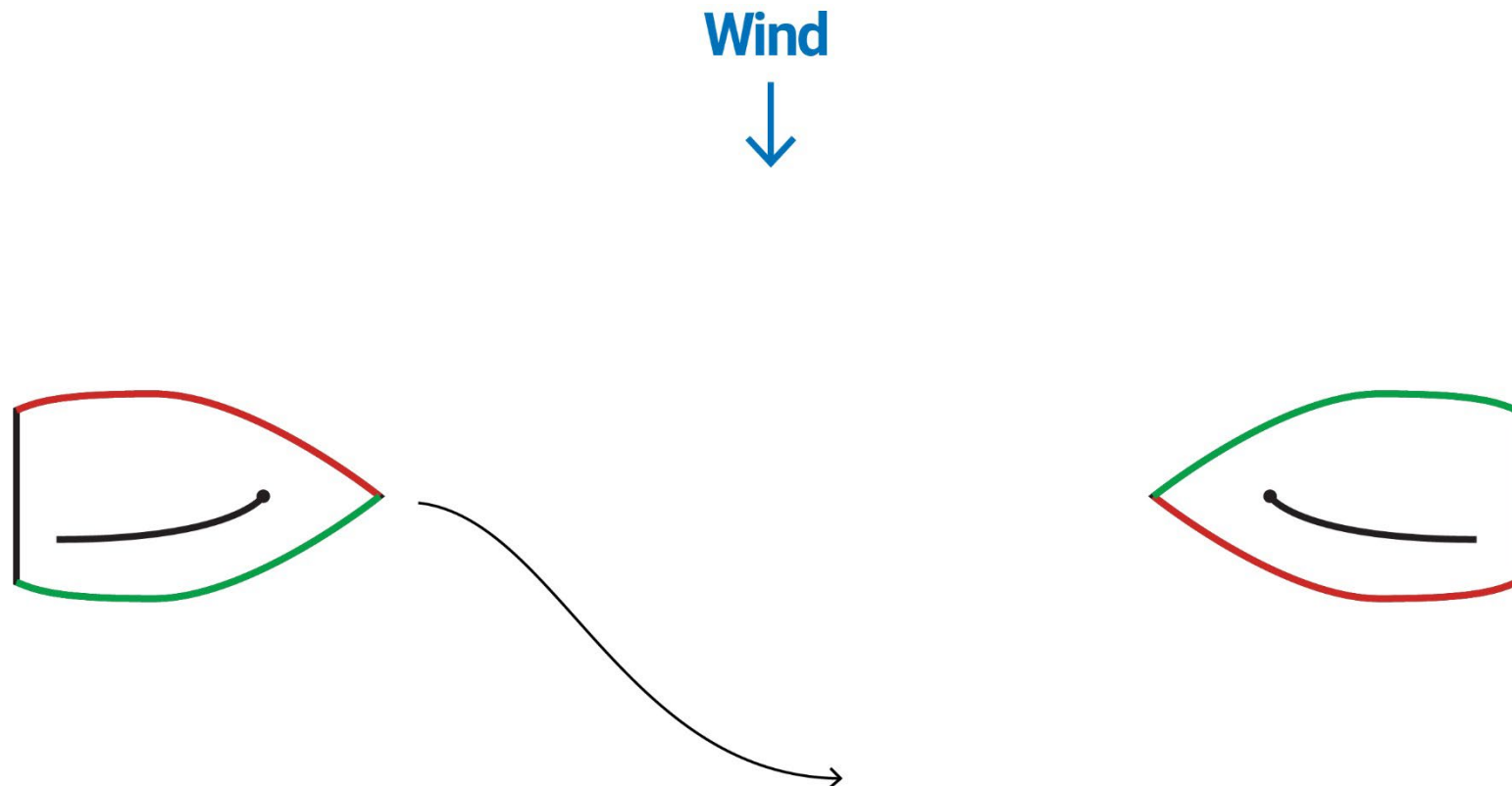
<https://www.bewhalewise.org/>

Rules-of-the-road

1. A port tack vessel shall keep clear of a starboard tack vessel.
2. A windward vessel shall keep clear of a leeward vessel.
3. A vessel clear astern shall keep clear of a vessel ahead.
4. Any vessel overtaking another shall keep clear.
5. A vessel tacking or gybing shall keep clear of a vessel on a tack. When two vessels are tacking or gybing at the same time, the one on the other's port side shall keep clear.
6. All non-commercial vessels shall keep well clear of commercial vessels.
7. IT IS EVERYONE'S RESPONSIBILITY TO AVOID A COLLISION.

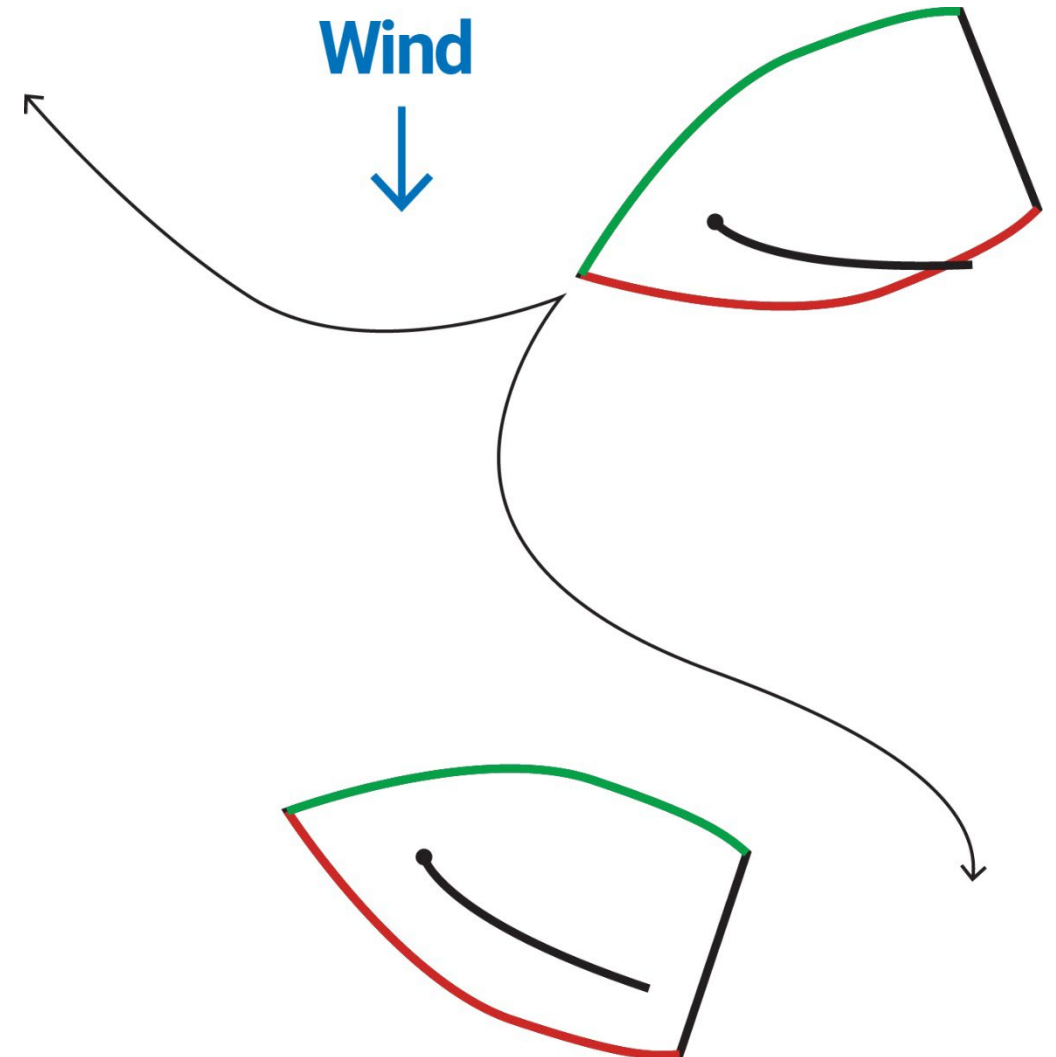
Rules-of-the-road

A port tack vessel shall keep clear of a starboard tack vessel.



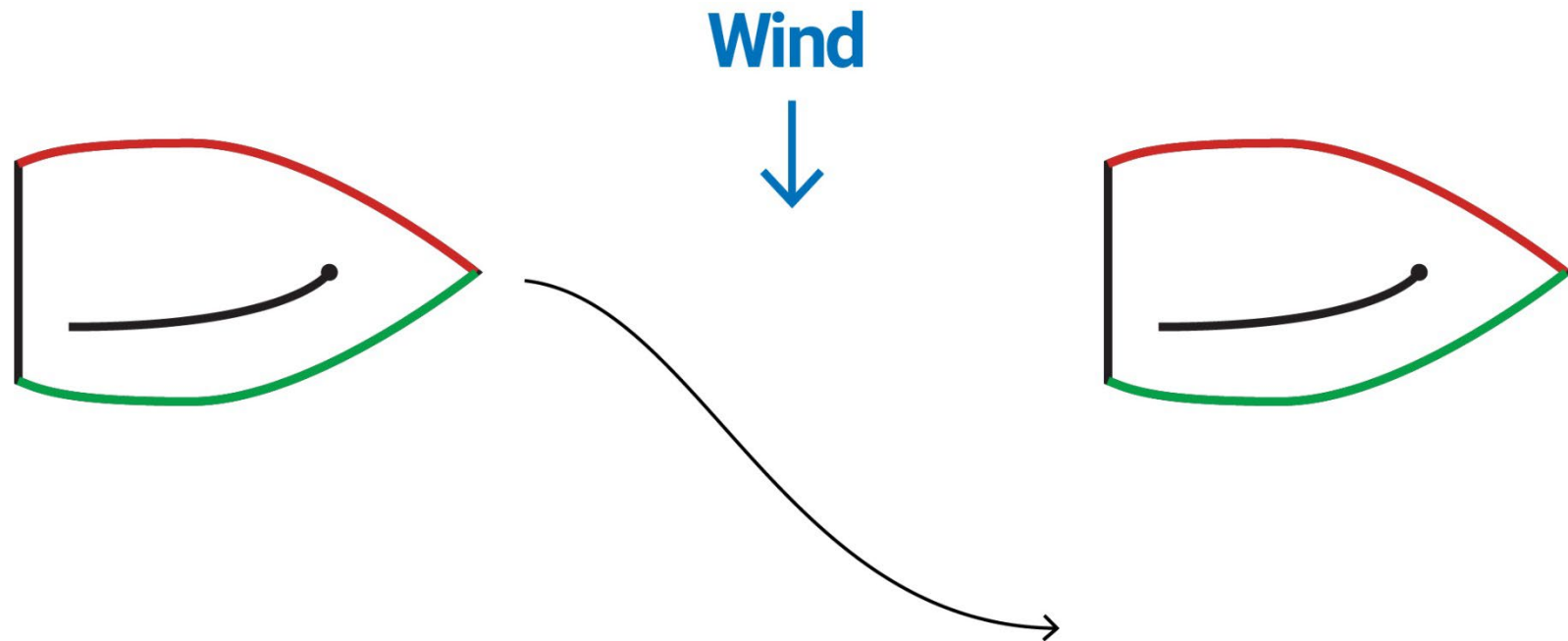
Rules-of-the-road

A windward vessel
shall keep clear
of a leeward vessel.



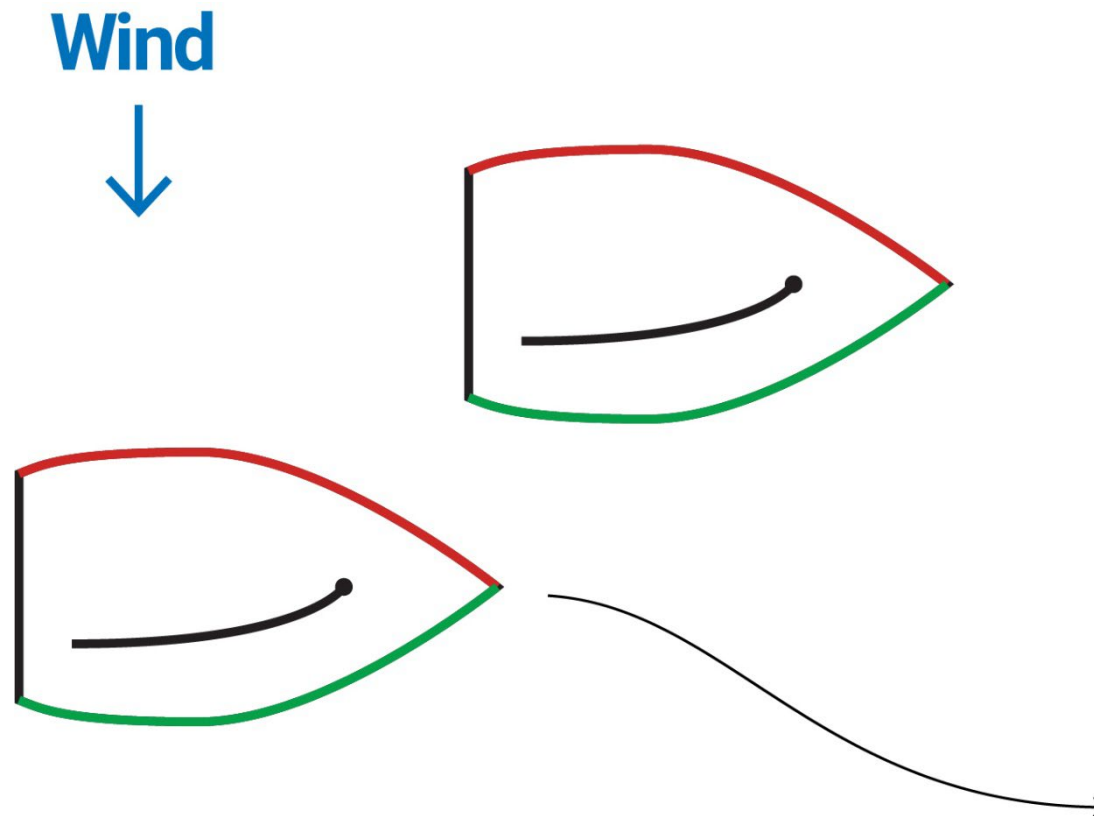
Rules-of-the-road

A clear astern shall keep clear of a vessel ahead.



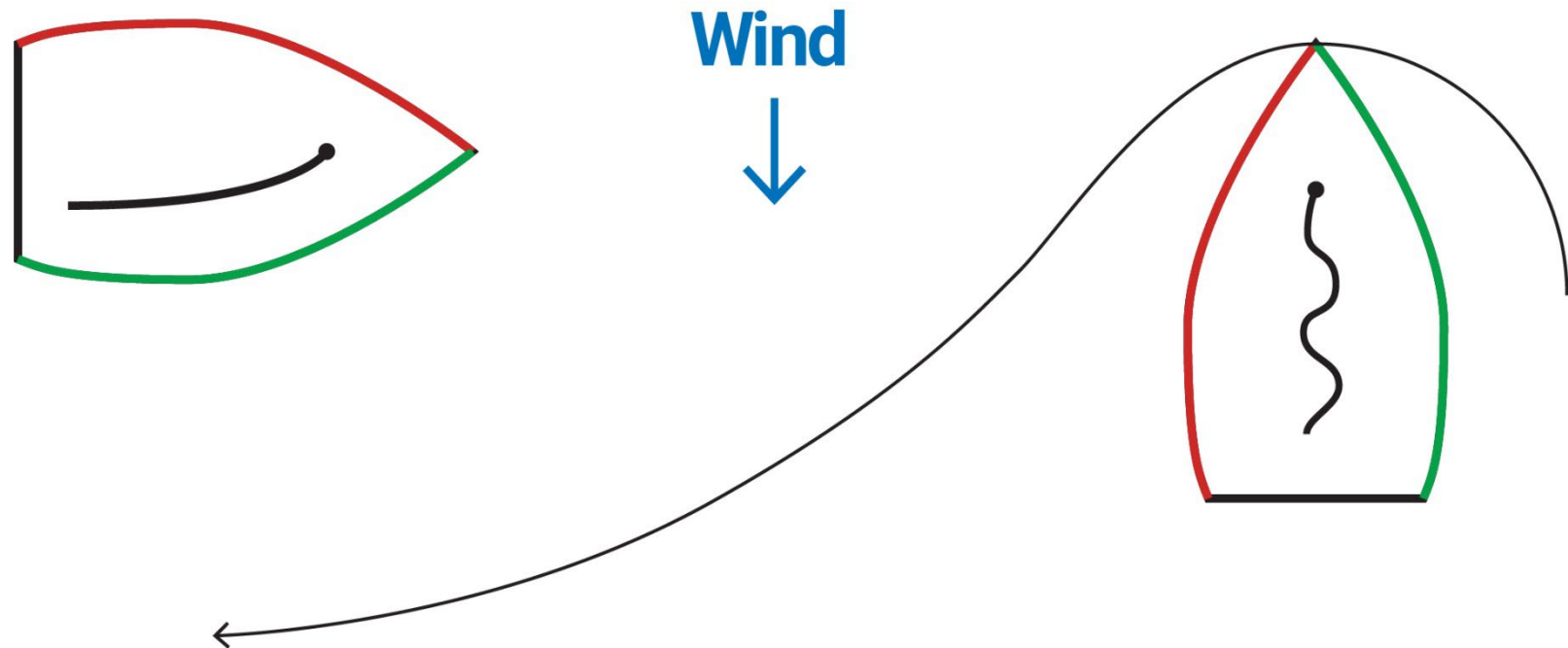
Rules-of-the-road

Any vessel overtaking another keeps clear.



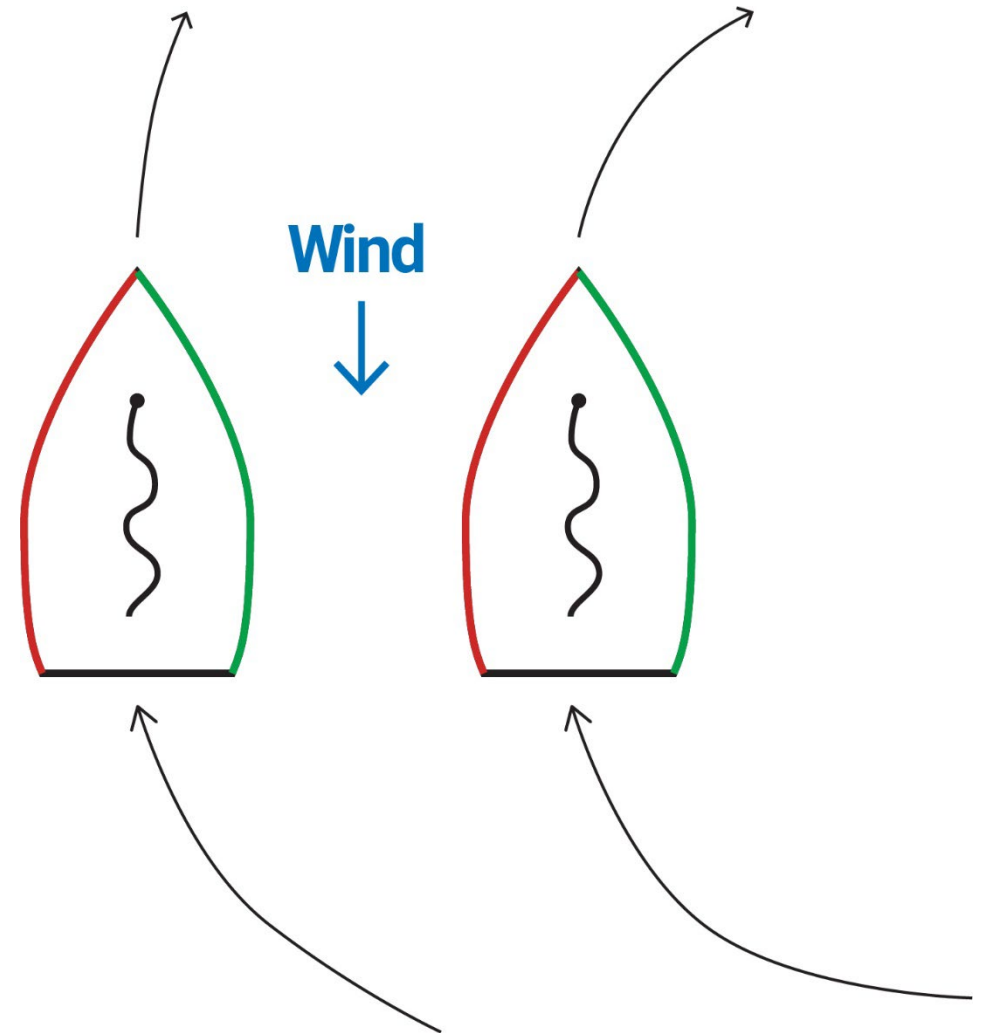
Rules-of-the-road

A vessel tacking or gybing shall keep clear of a vessel on a tack.



Rules-of-the-road

When two boats are tacking or gybing the one on the other's port side keeps clear.





**Jericho
Sailing Centre
Association**

English Bay
Safety Seminar

Rules-of-the-road

All non-commercial vessels shall keep well clear of commercial vessels.



Jericho
Sailing Centre
Association

English Bay
Safety Seminar

Rules-of-the-road

It is EVERYBODY'S
responsibility
to avoid a collision.



**Jericho
Sailing Centre
Association**

English Bay
Safety Seminar

Equipment

Make sure your craft complies with the
Minimum Safety Equipment Requirements
for your vessel

Safe Boating Guide:
www.tc.gc.ca/boatingsafety



Minimal Safety Equipment Requirements

Sailing Dinghy, Canoes, Kayaks, Rowboats, Rowing Shells:

- lifejacket or PFD for each person on board
- a sound signaling device
- buoyant heaving line at least 15m long
- manual propelling device(s)
- bailer or manual bilge pump

Minimal Safety Equipment Requirements

Windsurfers:

- lifejacket or PFD (inflatable not permitted)
- a sound signaling device

Minimal Safety Equipment Requirements

Stand up paddleboard:

- lifejacket or PFD (must be worn)
- a sound signaling device
- safety leash recommended

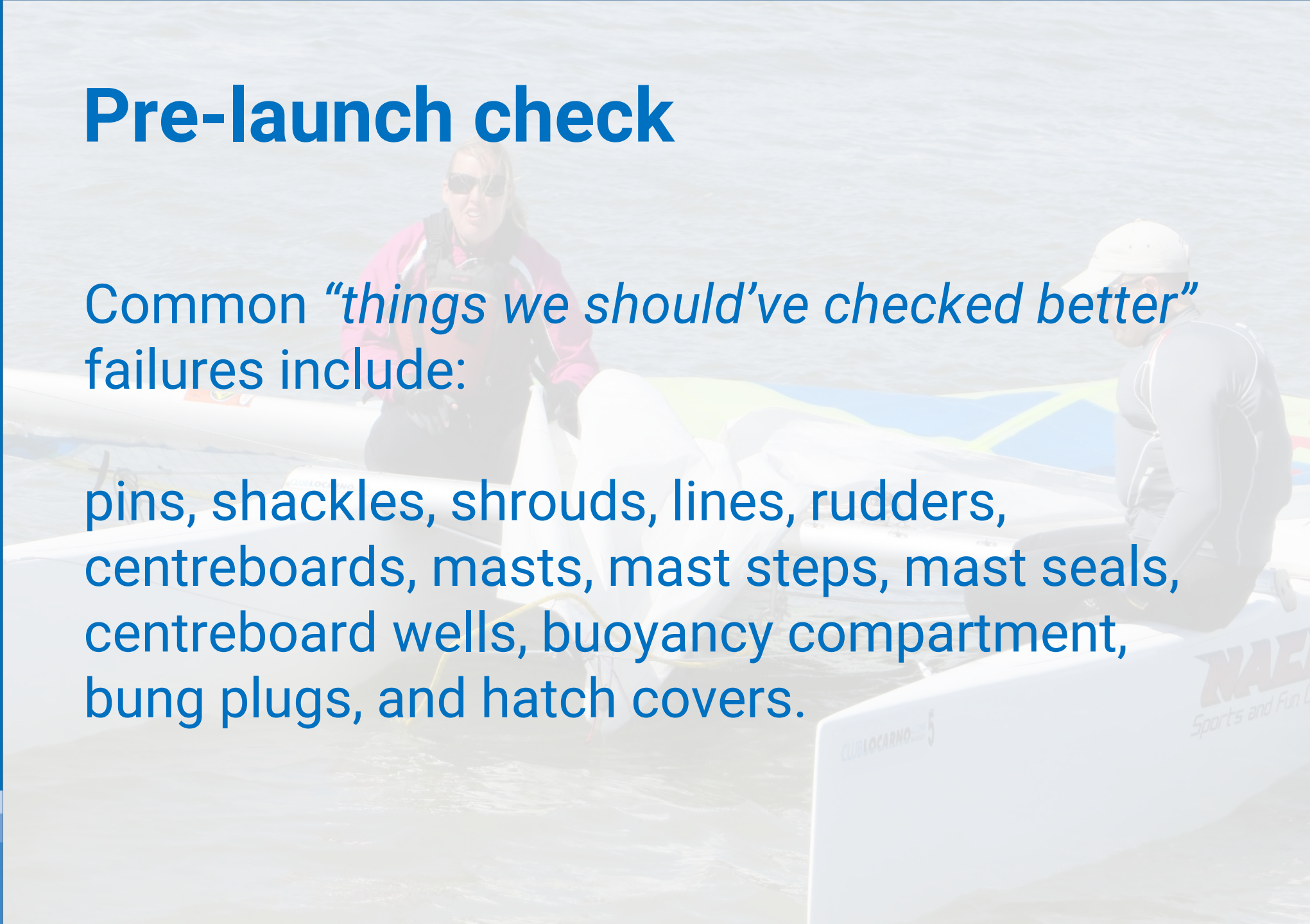
Pre-launch check



Pre-launch check

Common “*things we should’ve checked better*” failures include:

pins, shackles, shrouds, lines, rudders, centreboards, masts, mast steps, mast seals, centreboard wells, buoyancy compartment, bung plugs, and hatch covers.



Personal

- Wear your PFD – must be correct size & in good condition (zippers, buckles, fabric).
- Wear appropriate attire – wetsuit, drysuit, sprayskirt: hypothermia can strike even on the warmest of days.
- Wear UV protection – sunscreen, sunglasses, hat, clothing.
- Hydration

Personal

- Know your physical, skill & endurance limits.
- Carry a serrated knife.
- Know the various distress signals.
- Canadian Coast Guard *16 on your cell.

Hypothermia: signs & symptoms

Stage 1: shivering and reduced circulation

Stage 2: slow, weak pulse, slowed breathing, lack of co-ordination, irritability, confusion and sleepy behaviour

Stage 3: slow, weak or absent breathing or pulse

Hypothermia: 1-10-1

Upon immersion in cold water:

- First minute of cold shock
- 10 minutes of good dexterity and gross motor function
- 1 hour before losing consciousness

Hypothermia: 1 min – Cold Shock

Cold water shock likely causes more deaths than hypothermia. Immediately upon immersion, you will gasp for air. You could also experience muscle spasms or a rise in your heart rate and blood pressure. Worse yet, you could choke on water or suffer a heart attack or a stroke. Wearing a PFD keeps you afloat while you work on becoming calm.

Hypothermia: 10 mins – Cold Incapacitation

You'll have less than 10 minutes of functional movement before your gross and fine motor function becomes ineffective. This is when you need to get yourself out of the water if possible. Swim failure will occur within these critical minutes and if you are in the water without a PFD, drowning will likely occur.

Do not try to swim to shore.

Hypothermia: 1 hour – Unconsciousness

Even in ice water it could take approximately 1 hour before becoming unconscious due to hypothermia. If you understand the aspects of hypothermia, techniques of how to delay it, self rescue and calling for help, your chances of survival and rescue will be dramatically increased.

Heat Escape Lessening Position

Significantly prolongs survival in cold water



HELP (heat escape lessening posture)



Huddle together with sides touching.



**Jericho
Sailing Centre
Association**

English Bay
Safety Seminar

Hypothermia Resources

Cold water bootcamp

[http://www.coldwaterbootcamp.com/
pages/home.html](http://www.coldwaterbootcamp.com/pages/home.html)

